

\$24,150,000 - 3521 Sentinel Oak Road, Flower Mound

MLS® #20569646

\$24,150,000

5 Bedroom, 3.30 Bathroom, 4,607 sqft
Residential on 13.00 Acres

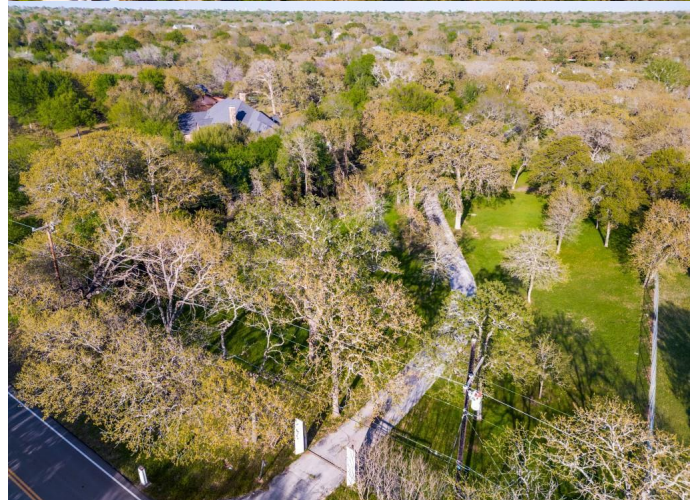
McCall, Flower Mound, TX

WOODBINE LAKE RANCH, Flower Mound, TX is comprised of eleven contiguous properties, 20 years in the making, exceeding 13 acres & shares a half mile boundary with Lake Grapevine. This portion of peninsula bordering the lake & Army Corps of Engineers, creates a visible range for beautiful sunrise & sunsets. Northshore trails, boat ramp and marina are within minutes! Paved int. roads host two separate electronic gated entrances. Over 14,000 sq ft of improvements include a 4700 sq ft house, 8500 sq ft 2 story horse stables & 800 sq ft 2 story guest house. Horse pastures are separated by 3 miles of fencing and include an arena, loafing shed, tack room, & horse ties. Lake Woodbine is one acre and stocked to enjoy fishing or kayaking. This park like property is home to 6 Oak trees over 200 yrs old among many others! Just minutes from DFW Int & Alliance, so could host a future permitted Helipad site! LOCATION IS KEY HERE WITH ENDLESS POSSIBILITIES!

Built in 1999

Essential Information

MLS® #	20569646
Price	\$24,150,000
Bedrooms	5
Bathrooms	3.30
Full Baths	3
Half Baths	3



Square Footage	4,607
Acres	13.00
Year Built	1999
Type	Residential
Sub-Type	Farm
Style	Contemporary/Modern
Status	Active

Community Information

Address	3521 Sentinel Oak Road
Subdivision	McCall
City	Flower Mound
County	Denton
State	TX
Zip Code	75022

Amenities

Utilities	All Weather Road, Asphalt, City Water, Electricity Connected, Septic, Well
# of Garages	3
Garages	Garage, Garage Door Opener
Waterfront	Lake Front " Corps of Engineers
Has Pool	Yes
Pool	In Ground, Outdoor Pool, Pool/Spa Combo

Interior

Interior Features	Cable TV Available, Cathedral Ceiling(s), Double Vanity, Eat-in Kitchen, Flat Screen Wiring, Granite Counters, Kitchen Island, Open Floorplan
Appliances	Home Theater
Heating	Central, Electric
Fireplace	Yes
# of Fireplaces	1
Fireplaces	Gas Logs, Recreation Room

Exterior

Exterior Features	Stable/Barn, Storage
Lot Description	Acreage, Agricultural, Cleared, Landscaped, Many Trees, Oak, Pasture, Sprinkler System, Tank/ Pond
Roof	Flat

Construction	Stucco
Foundation	Slab

School Information

District	Lewisville ISD
Elementary	Old Settlers
Middle	Shadow Ridge
High	Flower Mound

Listing Details

Listing Agent	Vicki Parvin
Listing Office	eXp Realty LLC

Users may not reproduce or redistribute the data found on this site. The data is for viewing purposes only. Data is deemed reliable, but is not guaranteed accurate by the MLS or NTREIS.

Listing information last updated on July 22nd, 2024 at 6:00am CDT